

**Preparation of landscape-urban-architectural competition
Lake Milada**

**Minutes of first and second meeting of
the consulting group and the meeting
with the public**

March 2020

Contents

MEETING OF THE CONSULTING GROUP AND THE PUBLIC OVER MAPS	3
CONSULTATION OF THE SHARED VISION OF LAKE MILADA AND THE COMPETITION ASSIGNMENT TOPICS WITH THE CONSULTING GROUP AND THE PUBLIC.....	12
SUMMARY OF OUTPUTS FROM CONSULTATION OF THE SHARED VISION OF LAKE MILADA AND THE COMPETITION ASSIGNMENT TOPICS WITH THE CONSULTING GROUP AND THE PUBLIC	13

Meeting of the consulting group and the public over maps

The suggestions provided in this part of the document are the output from the meeting of the consulting group and the meeting of the public over maps, which took place on 30 January 2020 in Hraničář cinema in Ústí nad Labem. The consulting group meeting took place from 2 to 6 p.m. and it was attended by over 30 representatives of the Regional Authority, representatives of towns and municipalities from the surrounding area, experts, university workers and other specialists. The meeting with the public followed after that from 6 to 8 p.m. and it was attended by 50 inhabitants from the surrounding towns and municipalities.

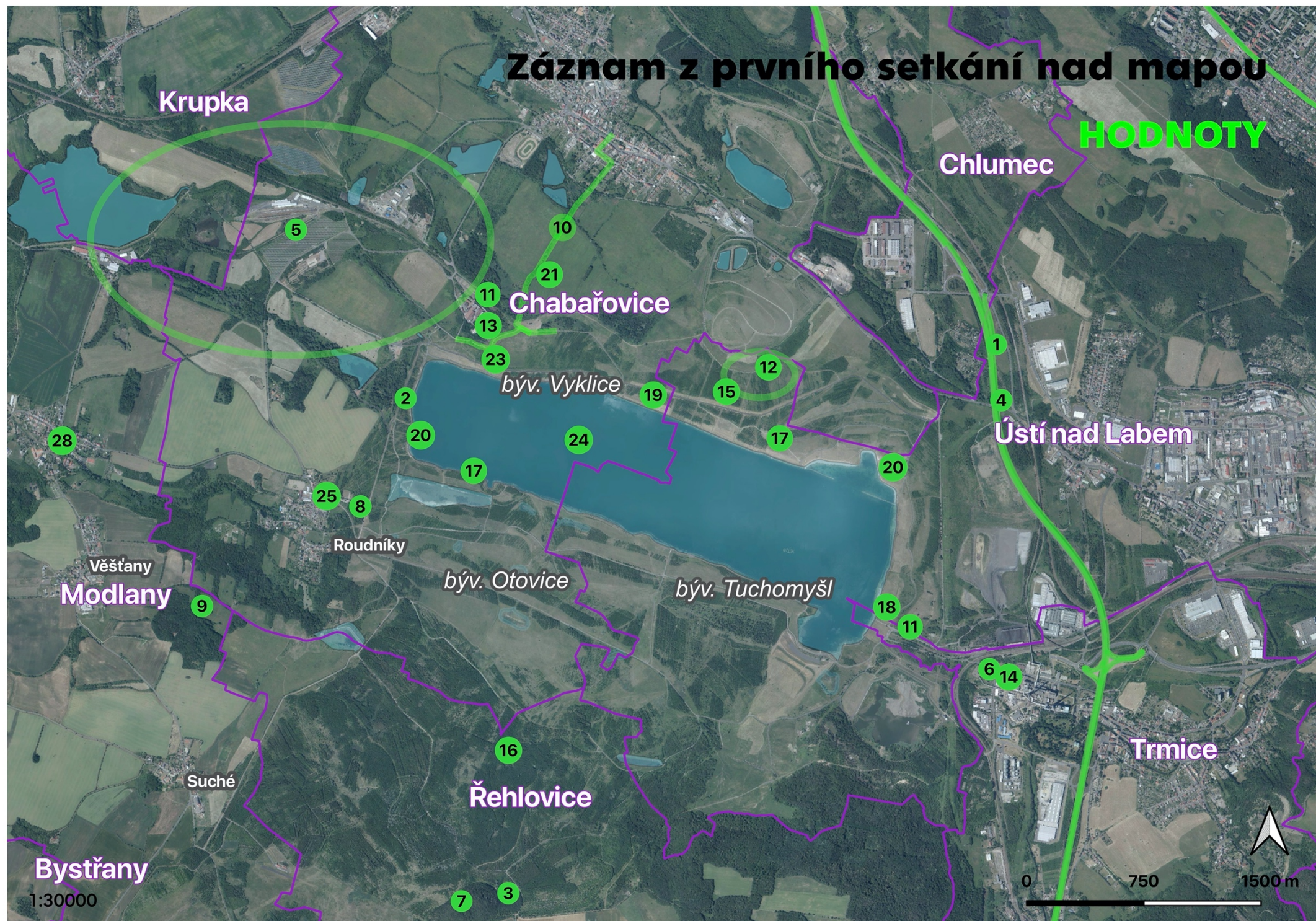
The objective of both meetings was to notify the present people of the prepared competition and of the possibility to get involved in the preparation of the competition. The main part of the meeting was dedicated to the evaluation of the current condition as seen by local inhabitants and members of the consulting group. Values, issues and future desirable and undesirable activities in the area were mapped. The objective of the discussion over the map was not to find a common viewpoint of evaluation of the current condition and the possible development of the area, but to ascertain and record opinions and suggestions from all participants which may differ.

Comments and suggestions were included in tables, recorded in an orthographic map of the area and divided into values, issues, future desirable and undesirable activities. The table also shows by crosses in which groups the comment or suggestion was submitted: veř. (public, comment from meeting over maps with the public), KS (comment from the meeting of the consulting group) and PS (comment was recorded during a meeting of the working group).



Záznam z prvního setkání nad mapou

HODNOTY

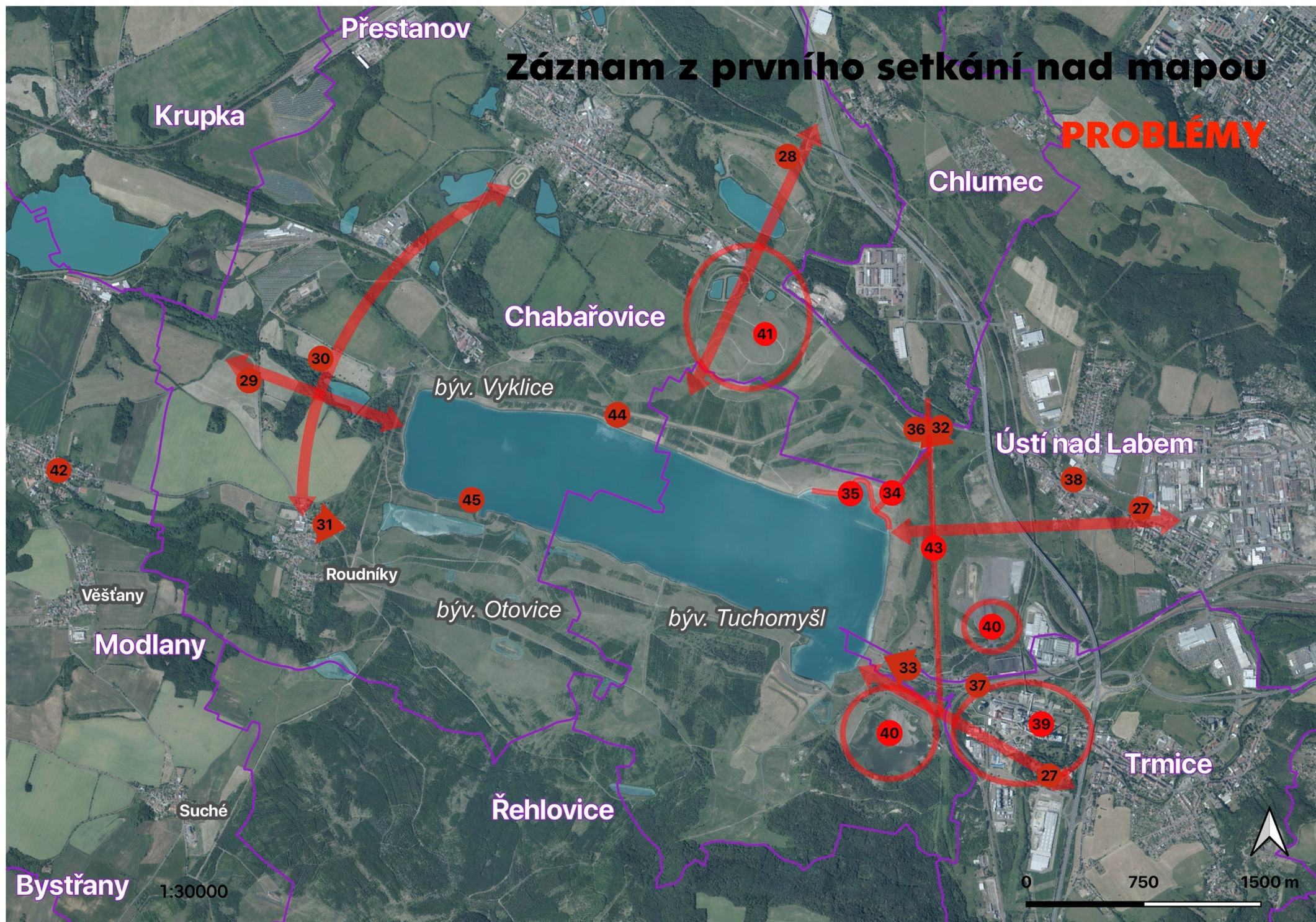


pub.	CG	WG	No.	
Milada location				
x	x	x		Milada is located in the immediate vicinity of Ústí nad Labem
x	x	x		Milada is located between two large cities
x	x		1	by means of the D8 motorway, Milada is well connected to Germany and Prague as well
x		x		Milada has its intimacy; it is hidden in a terrain depression
	x			Milada is located right between Krušné hory and České Středohoří
x	x			Milada is a part of a wider system of water reservoirs
general characterisation of Milada				
x	x	x		Milada is a natural oasis in the vicinity of 2 large cities
x	x	x		Milada is a quiet place near the bustle and hustle of the city
		x		Milada is a place with an element of adventure
	x			Milada has potential to improve the region's image
x				people are interested in the future of the lake
x	x	x		the whole area surrounding Milada is accessible to the public, there are no fences
x		x		vast areas surrounding Milada have one owner
x				the area is well maintained, clean
x	x	x		the value of the site is the termination of mining
x		x		the architectural competition is an opportunity for Milada's future
x				the western part of the area is quiet, not burdened by recreational activities

Pub.	CG	WG	No.	
significant sights				
x	x	x	3	the top of Jedovina hill with the ruins of a chapel provide a wonderful view
		x	4	there is a magnificent view of the whole lake and its surroundings from the motorway
		x	5	the whole area from Kateřina pond as far as the steel works is a nice location
x			6	the view of heating plant stacks behind the lake is iconic in its own way
x			7	the Na Habří hill dominates the area and provides a beautiful view
x			8	there is a wonderful view of Děčínský Sněžník from Roudníky
x			9	Věšňanský vrch dominates the western part of the area with a beautiful view of the whole lake
x			10	a nature trail from Chabařovice to the lake adds value
history				
x	x	x		Milada is a place with a very rich history
x	x	x	11	remains of a coal track document mining history
x	x		12	a Hussite battleground is placed above Milada
x	x	x	13	the steel works is an industrial sight - reminder of industrial past
x		x	14	the core of Trmická heating plant has its historic value
x	x	x	15	there is a beautiful view point for joggers in the northern part of the area
x			16	in the southern part, there is an arbour with a reminder of the now gone village of Lochočice
x				vicinity of UNESCO sight – Erzgebirge/Krušnohoří Mining Region

Pub.	CG	WG	No.	
sport, recreation, leisure				
x	x	x		even today the lake and its vicinity offer a number of sport opportunities
x		x	17	public camp sites at the lake are convenient locations for sleeping out in the country
x	x	x		the lake provides suitable conditions for water sports using wind
x			18	the Trmice side offers good access for water sport enthusiasts
			19	the circuit nearest to the lake has a "soft" gravel surface suitable for jogging
x			20	the Hlavní and Roudnická beach are the most frequently used
x				temporary outdoor elements in the location are well designed and frequently used
x				the conditions for dog owners are suitably set in the area
transport service, mobility				
x		x		banning cars from driving up to the lake adds value
x		x	21	the road from Chabařovice to the lake lined with trees already works well today for walkers and cyclists
x		x		parking areas for cars are behind the horizon and do not disturb the natural character
x			23	the remains of the former road to Vyklice could be used as an access road for coaches

Pub.	CG	WG	No.	
natural values				
x	x	x		the size of the area with the potential of returning back to the natural condition is an added value
x	x	x	24	the greatest value is the large water surface with quality water
x	x	x		Milada is surrounded by a number of valuable natural sites
x	x			Milada contains important wintering grounds for waterfowl birds
x				there is no light smog around Milada, it is a place suitable for watching stars
x				the area contains sites suitable for watching beautiful sunsets
source of green energy, water				
x		x		Milada provides an opportunity for energy use
x		x		Milada may be a source of water as a strategic resource
local amenities				
x			25	former community centre in Roudníky
x			26	former cinema in Modlany may become a cultural centre

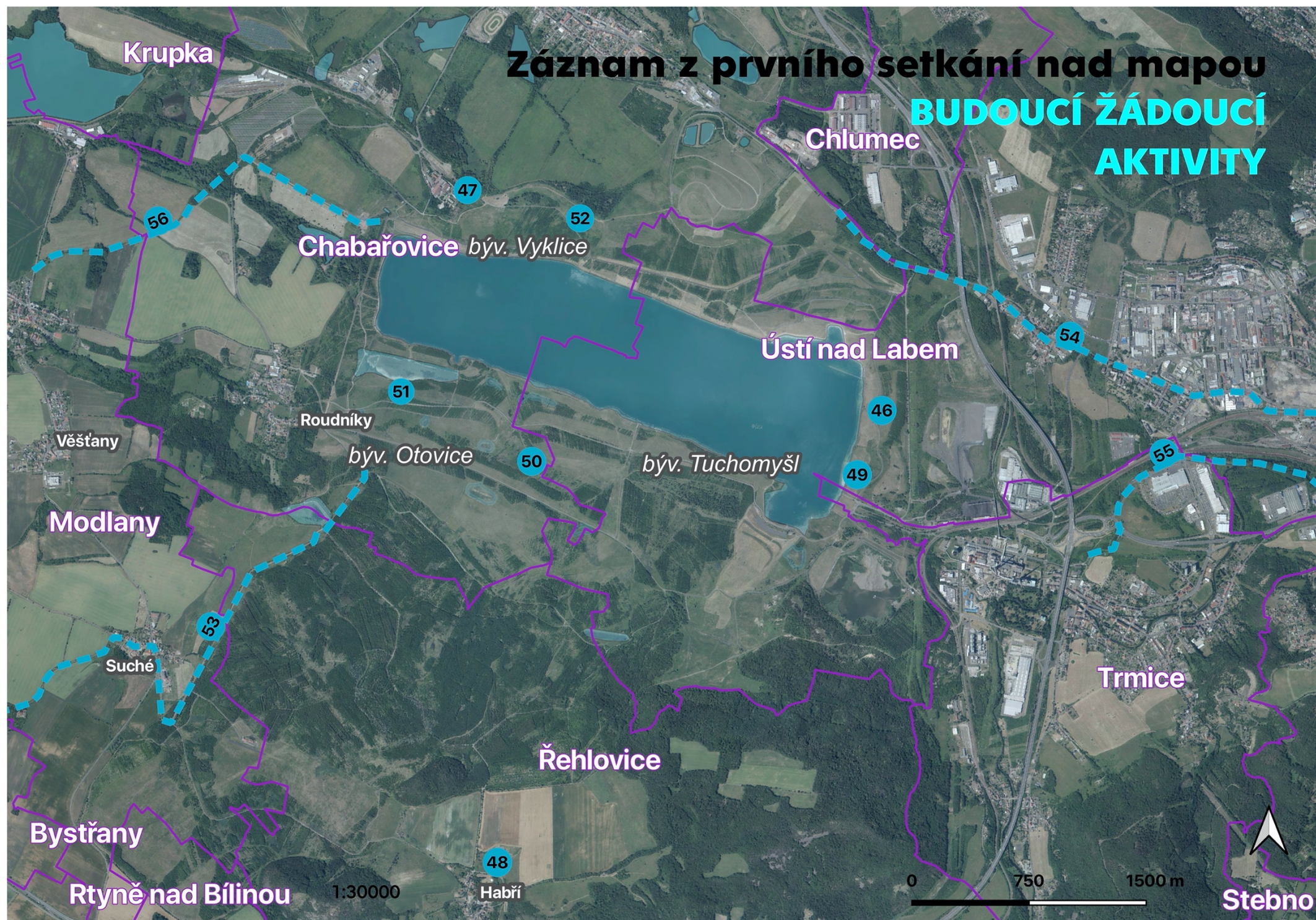


Pub.	CG	WG	No.	
site, general characterisation of lake area				
x				some Ústí nad Labem inhabitants do not know about Milada's existence
	x			process of termination of mining activities and subsequent reclamation was maladjusted according to some people
x	x	x		the area is still protected as a resource area; mining may still be renewed
transport services, mobility				
x	x	x	27	there is no direct and convenient link for walkers and cyclists from Ústí nad Labem
		x		missing a long-distance cycling route to Krušné hory
x			29	missing cycling route to Teplice
		x	30	missing a walking and cycling route from Roudníky to Chabařovice past the steel works
		x		the road from Chabařovice does not go straight to the lake, new visitors will have trouble finding their way
x		x		finding your way in the vast area is not easy
x	x	x	31	the Roudníky parking place is not well marked, it is chaos there
x	x	x	32	the 5. květen parking place has totally insufficient capacity in summer
x	x	x	33	the Trmice parking place is not easily accessible from the main road network
x		x	34	access to Milada from the 5. května parking place is not convenient
		x	35	the main beach does not have access for transport services
x		x		accessibility of the lake by public transport is insufficient
x	x		36	access to the lake along the road from the bus stop to Chabařovice is not safe
x	x		37	access to the lake along the road from the bus stop at the heating plant is not safe
x			38	the terminal trolley bus stop from Ústí nad Labem, which runs quite frequently, is too far away from Milada
				access routes to the lake from the surrounding road network are poorly marked
x				bike paths in the area are not interlinked, particularly in the southern part of the area

Pub.	CG	WG	No.	
environmental burdens of the area, burdening technical infrastructure in the area				
	x	x		noise from motorway traffic burdens Milada area
		x	39	Trmice heating plant industrial area is a source of noise, dust and creates a barrier in the area
x	x	x	40	the settling pit and fly ash dumping yard are an environmental burden of the area, they debase the access to the lake from Trmice
x	x	x	41	the chemical waste site is an environmental burden and a barrier in the area
x			42	the quality of water in Modlanský creek in Modlany is poor
		x	43	high voltage line forms a limit of the area development and is a visual impairment
sport, recreation, leisure				
x	x	x		roads around Milada offer limited sites for interaction with water
x		x		some fast food stands are a source of noise and litter
x	x			the area offers limited shade, it is missing particularly on the beaches in summer
x				collisions between swimmers, windsurfers and kite surfers may be an issue
x				missing attractive destinations for trips in the area
x				the promised quay has not been built yet
disruption to the natural character of the area				
x				according to some people, asphalt roads disrupted the natural character
x	x			steep, rocky shores disrupt the natural character of the area
	x		45	camp sites are not well placed in the southern side of the lake where valuable natural sites are located
documents of the history of the site				
x				no machines have been preserved documenting past mining activities
economy of area operation				
x				Roudníky municipality has no economic profit from mass events arranged at Milada
x		x		no commercial activities in the area, this is not economically feasible in the long term
x	x			management and maintenance of the area is financially demanding

Záznam z prvního setkání nad mapou

BUDOUCÍ ŽÁDOUCÍ AKTIVITY



Pub.	CG	WG	No.	
sport, recreation, leisure				
x				singletracks for cyclists could be built in the woods in the southern part of the area
x				the area could have charging stations for electric bikes
x				Milada is suitable for water sports using wind; these sports should be supported
x	x			Milada would benefit from motorless water transport and facilities it requires
x	x			even today, the area around Milada lacks storage facilities for personal things and sports equipment
x	x	x		the Milada area should have rental of sports equipment, boats, pedalos
x	x			facilities for sports club located nearby should be created in the vicinity of Milada
x			46	changing cabins should be built near Milada for winter swimmers
x				a sauna with cold bath could be built near Milada
x				various sports grounds could be built near Milada, e.g. beach volleyball or a small golf course
x				a part of Milada shore could be dedicated as a nudist beach
x	x			access to water should be allowed even at places with no beach
amenities, furniture, minor architectural elements				
x			47	the Nové Vyklice project could also include a hotel
x			48	a new hotel could be built near Habří
x				a campsite with basic facilities (toilets, washing rooms, refreshments) could be near Milada
x			49	Trmice beach seems to some as an ideal place for building of commercial amenities
x				a part of civic amenities should be built in the surrounding municipalities
x				a restaurant open all year round could be established near Milada
x	x			the area should provide quality toilets, refreshments and other facilities to a reasonable extent
x				use of Milada for recreation could be complemented by a shared area for work in nature
x				baskets for sorted waste should be placed around Milada

Pub.	CG	WG	No.	
x				more tables and benches should be placed in various places around Milada
x			50	a waterfowl birds observation post could be built in the southern slopes
x			51	a nature trail focusing on nature and no longer existing villages could be established in the southern part
x				houses on water could be an interesting element in the territory
x			52	a viewing tower should be built in the north-west slope above Milada
x				occasional cultural events could be held at Milada, even a larger festival once a year
transport services and mobility				
x			53	a bike path could run along Ždírnický creek
x	x		54	a bike path could run from Tovární Street
x	x		55	a bike path could run along Bílina from Globus
x			56	bike paths could run from Modlany to the lake
overall concept				
x	x			new technologies, environmental solutions should be used in the area
x				a power supply network should be provided in the area so that stands would not use diesel generators
x	x	x		expansiveness and accessibility of the area should be preserved

Future undesirable activities

Pub.	CG	WG	No.	
area character				
x	x	x		the area should not be divided among many owners
x				the area should not have a "cheap pub" character
new development				
x	x	x		Milada should not be surrounded with cottages and camp sites
x		x		cottage settlements should not be established in the area
x				residential houses should not be built in the close vicinity of Milada
undesirable activities				
x				activities generating noise should not be conducted near Milada
x	x	x		in order to maintain water quality, fishing should not be allowed in Milada
x	x			motor boats, liners should not run in Milada
x				autodromes, quad rentals, etc. should not be established in the area
x		x		cars should not drive closer to Milada than they do today
	x			winter activities disturbing wintering birds should not be supported

Consultation of the Shared Vision of Lake Milada and the competition assignment topics with the consulting group and the public

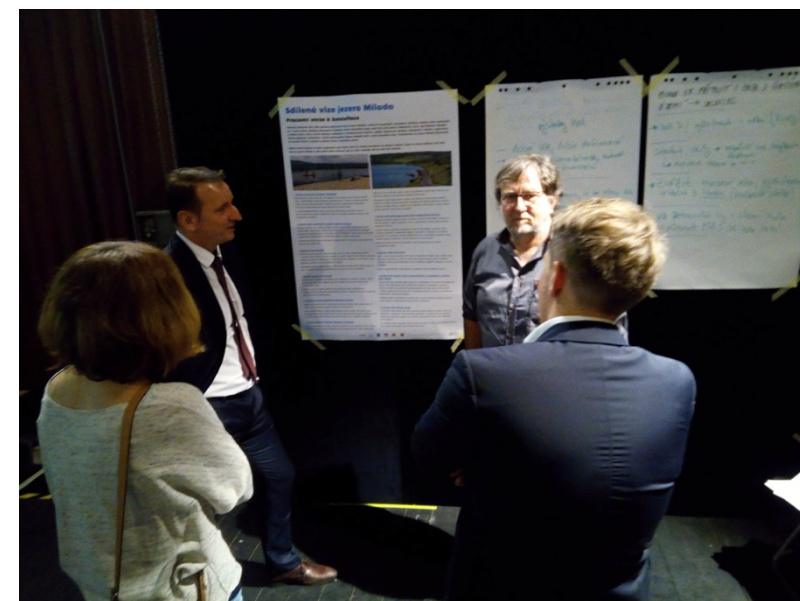
The stimuli stated in this part of the document are the output from consultation of the Shared Vision of Lake Milada and the competition assignment topics with the consultancy group and the public. Both consulting meetings took place on 17 February 2020

in Hraničář cinema in Ústí nad Labem. The meeting with the consultancy group took place from 2 to 6 p.m. and it was followed by a meeting with the public from 6 to 8 p.m.

Both documents "Shared Vision of Lake Milada" and "Competition Assignment Topics" will form the basic materials for competition assignment. They are the result of the negotiation of the working group; the members of the working group are besides PKÚ, s. p., ONplan lab, s.r.o. (competition organizer) also the representatives of the town of Ústí nad Labem, Chabařovice, Trmice, Řehlovice municipality, the Regional Authority and also experts in various fields.

The objective of the meeting was to present both documents and to give the attendees the opportunity to comment on them. The meeting participants were able to receive from PKÚ and competition organizer representatives replies to their answers and to provide their comments and suggestions. Both documents were also published on the PKÚ website and suggestions regarding them could be sent to the competition organizer for the period of one week after the meeting.

All comments and recommendations were listed and divided according to topics. Reaction to all comments and recommendations in the work group are stated in the tables below.



Summary of outputs from consultation of the Shared Vision of Lake Milada and the competition assignment topics with the consulting group and the public

Shared vision	
comments	reaction to comments
The wider vicinity of Lake Milada should correspond to the existing recreational function; it should not contain too many large arenas or other large structures.	Section 1 of the vision states i.a. the following: "... In particular vast, continuous natural areas will be protected,..." Section 6 states i.a. the following: "However, the areas and structures will not create a barrier in the area which will preserve its natural character." This is further developed in individual topics of the assignment. The assignment will be based on the summary of all limits in the area (forest grounds, geologically unstable area, nature-like and valuable biotopes and suchlike), which clearly specify most of the area as not available for any development.
The University of Jan Evangelista Purkyně should be involved in the development of the area. The University is an opportunity for the development of Milada; Milada is an opportunity for the development of the University.	Negotiations will be held with UJEP about the possibility of its involvement in the competition and subsequent development of the area.
The vision should be communicated comprehensibly and plainly with the public.	A new website and new visual identity will be created for Lake Milada. As part of the identity, the vision of the lake will be communicated and shared.
Areas in the wider vicinity, e.g. Chlímec may join the shared vision.	The possibility to join the memorandum will not be closed for the municipalities nearby.
The first sentence in section 3 should be deleted: "Milada should help to correct the wrongdoings committed against local inhabitants and the countryside."	It will be replaced by the following sentence: "Milada should help to overcome the wrongdoings committed against local inhabitants and the countryside."

Sports and recreation	
comments	reaction to comments
In winter, water sport activities could be limited on the lake since the lake provides important wintering grounds for waterfowl birds.	<p>The assignment materials will contain as one of the limits for development the nature-like and valuable biotopes and other natural limits.</p> <p>The competition must respect i. a. these limits and propose such solutions which will allow good balance between the use of the area for recreation and environmental protection.</p> <p>Particular organizational measures for protection of wintering and nesting birds will be established in the operation model of the area. This should be communicated with environmental protection authorities.</p>
Organization of mass events should be considered, in particular their suitability due to the increased noise with regard to the fact that the site provides important nesting grounds for birds.	
Permissions for private vessels might pose a limit for recreational use of the lake.	The area development concept will specify the basic capacity of usability of the area so that various ways of use of the lake and the whole area might be combined. The use of the lake will be limited i.a. by the proposed possibilities of anchoring of vessels, entrances to water, etc.
Recreational no-emission sailing may be specified in the assignment as "motorless" navigation/sailing.	<p>The assignment will still contain the title "recreational non-emission navigation".</p> <p>The operating rules will then have to limit the possibility of the use of motor powered vessels, so that other uses of the lake would not be limited and so that individual environment components would not be endangered.</p>
Indoor sport facilities should not be too large; these are better suited in cities. Indoor sport facilities should not compete with sports facilities in Ústí nad Labem, Teplice and Chabařovice. If indoor sport facilities should be placed in the area, these should be rather small and well connected to the facilities in the surrounding settlements.	<p>Section 1 of the vision states i.a. the following: "... In particular vast, continuous natural areas will be protected,..."</p> <p>Section 6 states i.a. the following: "However, the areas and structures will not create a barrier in the area which will preserve its natural character."</p> <p>This is further developed in individual topics of the assignment.</p> <p>The assignment states: "Amenities should not compete with amenities of the surrounding settlements but serve maximally to lake visitors and local inhabitants."</p>
The area should contain fewer structures. Sport facilities should be primarily outdoor complexes – e.g. climbing walls, playgrounds.	

The area should not look "like an urban area", it should still keep its natural character.	The assignment will map basic sport and recreation facilities and accommodation capacities in the surrounding settlements. The participants in the competition may then use this as supporting materials for establishment of sport facilities in a wider area.
The assignment should specify facilities for arrangement of regular or one-off mass events and outdoor mass events.	It will be added in the assignment.
The area could hold "fun events" – e.g. games without borders, dragon boat races.	The facilities for these events should be designed as part of the requirement for creation of facilities for arrangement of mass outdoor events.
Besides sport events, the area could also hold cultural events – e.g. festival on water, photography contests. These should be a part of Lake Milada marketing.	
Indoor sport facilities could have a form of inflatable structures, which would be removed in the summer.	The assignment will include a "database of ideas for Milada" which will contain particular ideas and suggestions generated at meetings over maps and from assignment consultations. This database will be an inspiration for architectural interventions in the territory.
There are no single tracks in the surroundings; they could be placed at Rovný and U Habří site.	
Viewing towers (e.g. at the Jedlová site) could be built in the area as destinations for hikers and cyclists.	
A unique feature could be developed for Lake Milada, e.g. the possibility to go under water (something luminescent made of glass attracting fish, a boat with a glass bottom, diving bells, underwater recording and projection to a screen on the shore).	
Support "sandy beach" sports.	

Amenities	
comments	reaction to comments
Besides sports amenities, the area might have an interpretation Centre – Centre for Nature, Technology and History. This could be a museum branch. It is advisable to consider its link to UNESCO, the centre of industrial heritage in Ostrava and other sites.	The assignment will include a "database of ideas for Milada" which will contain particular ideas and suggestions generated at meetings over maps and from assignment consultations. This database will be an inspiration for architectural interventions in the territory.
Milada could provide support facilities for forest kindergartens.	
Accommodation capacities of the lake could be used for day camps, open air school.	
An art workshop could be established near Milada.	

Transport services	
comments	reaction to comments
Besides sidings, the assignment should also mention the remains of the original Ústí nad Labem – Teplice – Chomutov railway track. The remains of this track could connect Milada to both Ústí and Teplice.	It will be added to the assignment.
Milada is already today visited by people from Teplice; the assignment should include a requirement for the search for a connection to Teplice.	It will be added in the assignment.

Area development strategy	
comments	reaction to comments
The marketing of Lake Milada should be included in destination marketing and management. The question is: which DA will actively focus on Milada?	Milada is a part of DA České Středohoří, with which the plans for area development and the extended cooperation possibility will be communicated from now on.
In the future, it is necessary to place emphasis on good spatial and time coordination of activities in the area so that these activities would not clash but complement each other and would not disrupt the natural character of the site.	The basic idea should be included in the strategy of area development. This should also include a model of area management, which would deal with i.a. future coordination of activities in the area.
How to set limits so that the facilities would not be excessive?	The first requirement stated in the vision is the maintenance of the natural character of the area and its accessibility. The area contains a number of limits which will allow construction work only at selected sites. These requirements and limits alone set the limit for the capacity of areas for amenities.
Establishment of a local action group (MAS) is anticipated in the area.	As soon as MAS has been established, plans for area development and the possibility of cooperation setup will be further communicated with it.
The assignment of the competition must place emphasis on feasibility and the necessity of multiple source funding.	<p>Section 9 of the vision states i.a. the following: "Development of Lake Milada's surroundings will be built on a realistic and financially feasible solution..." and also: "It is necessary to achieve an optimum model, which will allow efficient implementation of plans, area management and long-term economic sustainability."</p> <p>As part of one of the topics of the assignment ("Area Development Strategy"), the issues of feasibility, multi-source funding and breaking of the plan implementation into stages will be dealt with.</p>
It is necessary to describe the process which will result in implementation of the concept, determination of stages, powers – set the implementation action plan.	